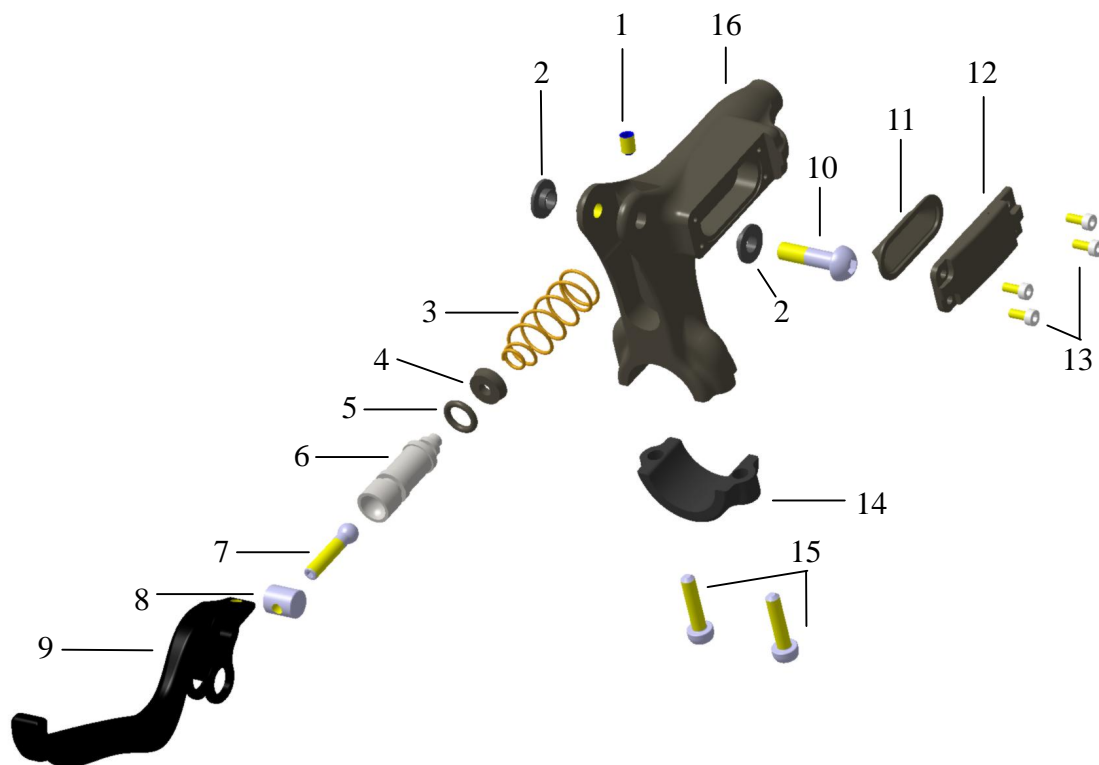
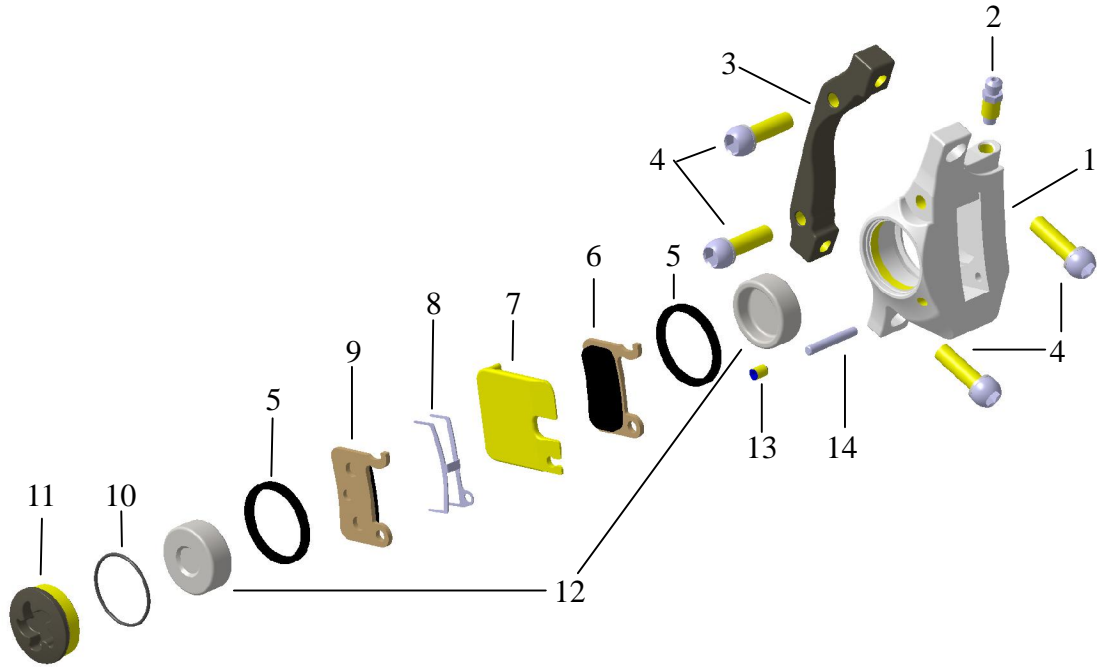


Master Cylinder



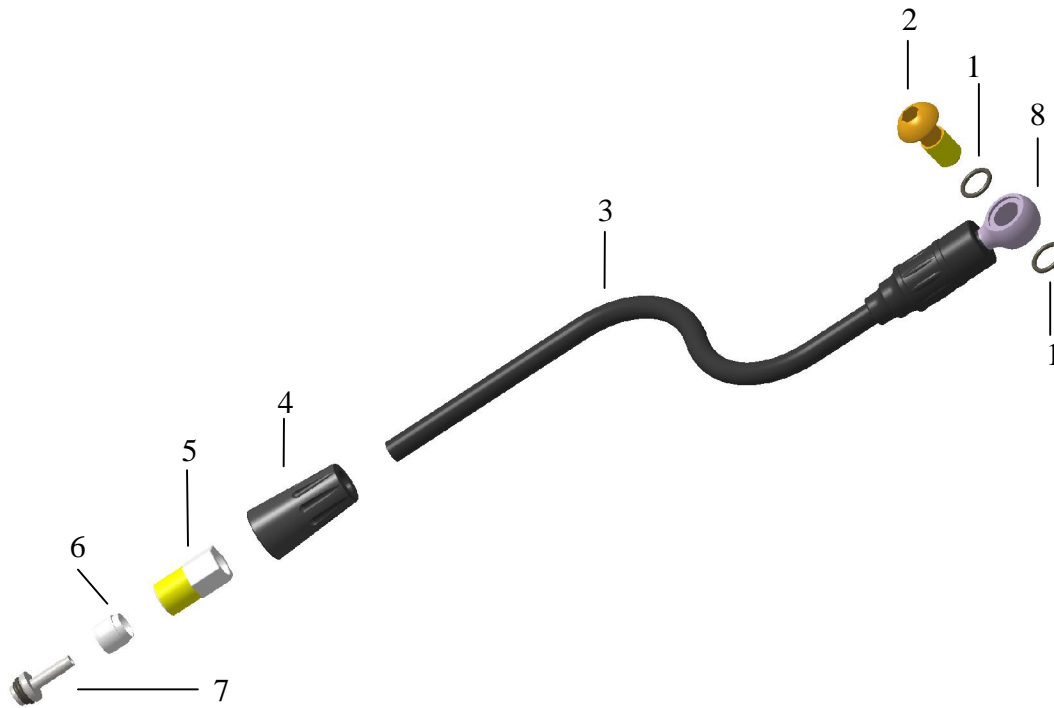
| Item | 中文 | English | Qty. |
|------|-------------|-----------------------------------|------|
| 1 | M4×6 mm 螺絲 | M4×6 mm Screw | 1 |
| 2 | 塑膠墊片 | Lever Pin Bushing | 2 |
| 3 | 回覆彈簧 | Return Spring | 1 |
| 4 | 煞車主缸活塞環 | The Master Cylinder Piston of Cup | 1 |
| 5 | P7 O 型環 | P7 O-Ring | 1 |
| 6 | 煞車主缸活塞 | Master Cylinder Piston | 1 |
| 7 | 推桿 | Push Rod | 1 |
| 8 | 把手軸心 | Lever Shift | 1 |
| 9 | 把手 | Lever | 1 |
| 10 | M5×19 mm 螺絲 | M5×19 mm Screw | 1 |
| 11 | 油蓋墊片 | Reservoir Plug | 1 |
| 12 | 油蓋 | Reservoir Cap | 1 |
| 13 | 油蓋螺絲 | Reservoir Cap Screw | 4 |
| 14 | 管夾 | Clamp | 1 |
| 15 | 管夾螺絲 | Clamp Screw | 2 |
| 16 | 刹車主缸本體 | Master Cylinder Body | 1 |

Caliper Body



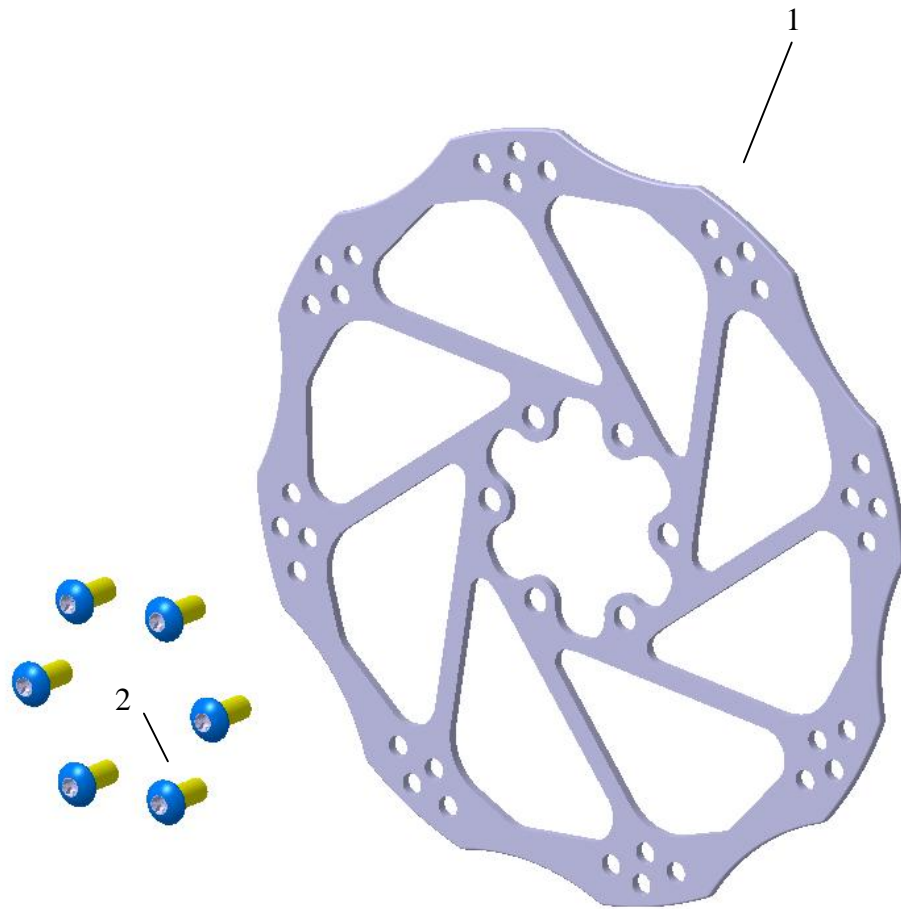
| 項次 | 中文 | English | Qty. |
|----|-------------|---------------------|------|
| 1 | 卡鉗本體 | Caliper Body | 1 |
| 2 | 卸油閥 | Caliper Bleed Screw | 1 |
| 3 | 轉接座 | Adapter | 1 |
| 4 | M6×18 mm 螺絲 | M6×18 mm Screw | 4 |
| 5 | 方型油封 | Square Seal | 2 |
| 6 | 來令片, 內側 | Pad, Inner | 1 |
| 7 | 擋片 | Travel Spacer | 1 |
| 8 | 來令片彈片 | Pad Spring | 1 |
| 9 | 來令片, 外側 | Pad, Outer | 1 |
| 10 | 卡鉗螺絲油封 | Bore Cap Seal | 1 |
| 11 | 卡鉗螺絲 | Bore Cap | 1 |
| 12 | 卡鉗活塞 | Caliper Piston | 2 |
| 13 | M4×6 mm 螺絲 | M4×6 mm Screw | 1 |
| 14 | 來令片插銷 | Pad Pin | 1 |

Hose



| 項次 | 中文 | English | Qty. |
|----|------------|--------------------|------|
| 1 | 油管油封(A270) | Hose Seal (A270) | 2 |
| 2 | 油管螺絲 | Banjo Bolt | 1 |
| 3 | 油管 | Hose | 1 |
| 4 | 防塵套 | Nose Cone | 1 |
| 5 | 油嘴鎖附螺帽 | Hose Nut | 1 |
| 6 | 油嘴襯套 | Hose Insert Sleeve | 1 |
| 7 | 油嘴 | Hose Insert | 1 |
| 8 | 油管接頭 | Hose Connection | 1 |

Disk (DF02)



| 項次 | 中文 | English | Qty. |
|----|----------|------------|------|
| 1 | 碟盤 #DF02 | Disk #DF02 | 1 |
| 2 | 碟盤螺絲 | Disk Screw | 6 |