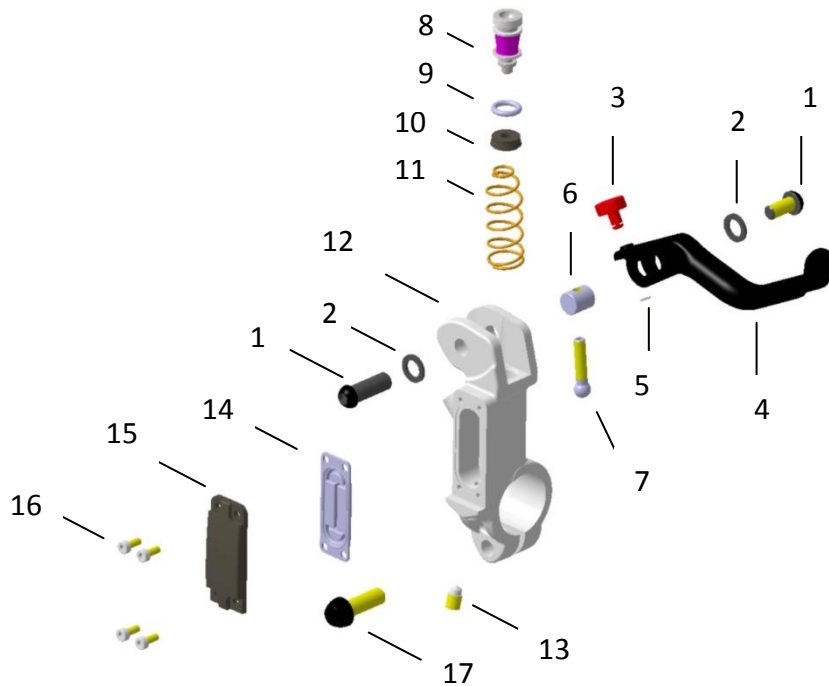
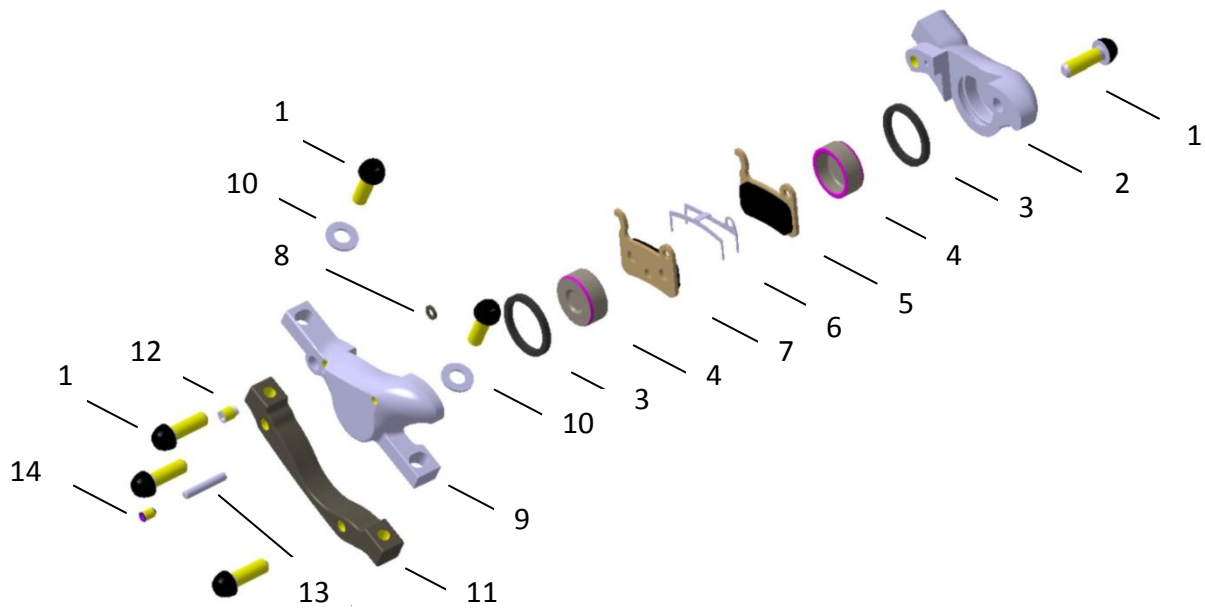


# Master Cylinder



Item	中文	English	Qty.
1	把手插銷	Lever Pin	1
2	把手插銷墊圈	Lever Pin Bushing	2
3	把手間距調整螺絲	Lever Reach Adjuster	1
4	把手	Lever	1
5	E 扣	E-Retaining Ring	1
6	把手軸心	Lever Shift	1
7	推桿	Push Rod	1
8	煞車主缸活塞	Piston of Master Cylinder	1
9	P7 O 型環	P7 O-Ring	1
10	煞車主缸活塞環	Cap of Master Cylinder Piston	1
11	回復彈簧	Return Spring	1
12	煞車主缸本體	Master Cylinder Body	1
13	注油螺絲	Bleeding Screw	1
14	油蓋墊片	Reservoir Plug	1
15	油蓋	Reservoir Cap	1
16	油蓋螺絲	Reservoir Cap Screw	4
17	管夾螺絲	Clamp Screw	1

# Caliper



Item	中文	English	Qty.
1	M6 x 18L 螺絲	M6 x 18 L Screw	6
2	煞車卡鉗本體 (內)	Caliper Body(Inner)	1
3	方形油封	Square Seal	2
4	活塞	Caliper Piston	2
5	來令片(內)	Pad(Inner)	1
6	來令片彈片	Pad Spring	1
7	來令片(外)	Pad(Outer)	1
8	卡鉗油封	Caliper Seal	1
9	煞車卡鉗本體 (外)	Caliper Body (Outer)	1
10	1mm 不鏽鋼華司	1mm Stainless Washer	2
11	轉接座	Adapter	1
12	注油螺絲	Bleeding Screw	1
13	來令片插銷	Pad Pin	1
14	來令片插銷固定螺絲	Pad Pin Fixed Screw	1